



2 Hawthorn Road

, London, NW10 2NE

£699,950

Located in the heart of Willesden Green is this three bedroom duplex apartment set behind a gated mews development.

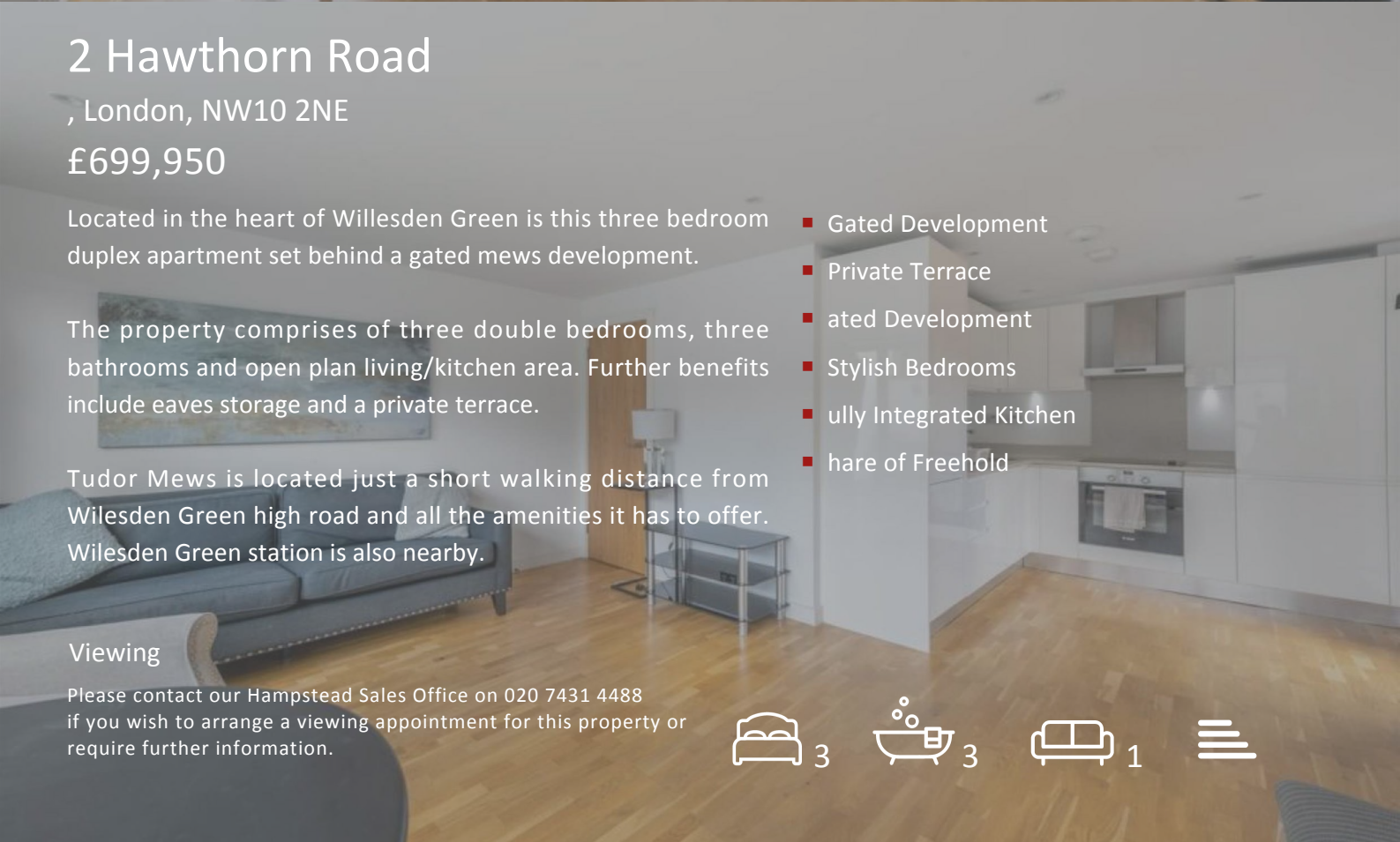
The property comprises of three double bedrooms, three bathrooms and open plan living/kitchen area. Further benefits include eaves storage and a private terrace.

Tudor Mews is located just a short walking distance from Willesden Green high road and all the amenities it has to offer. Willesden Green station is also nearby.

- Gated Development
- Private Terrace
- Gated Development
- Stylish Bedrooms
- Fully Integrated Kitchen
- Share of Freehold

Viewing

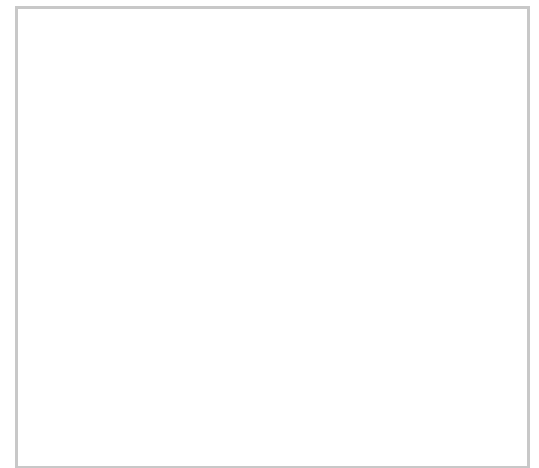
Please contact our Hampstead Sales Office on 020 7431 4488 if you wish to arrange a viewing appointment for this property or require further information.



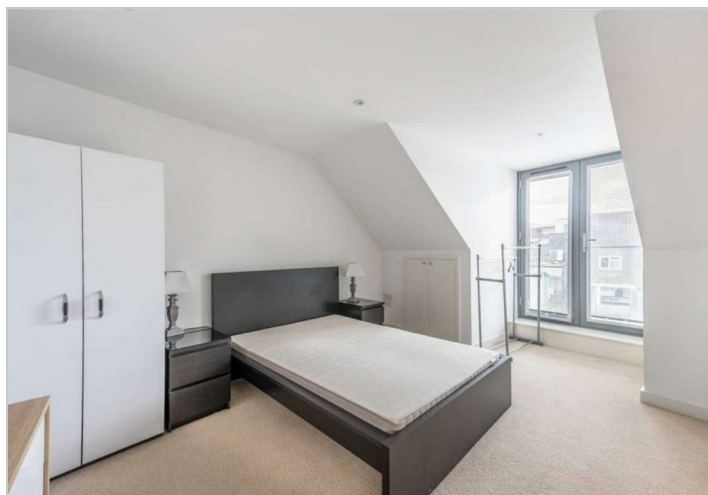
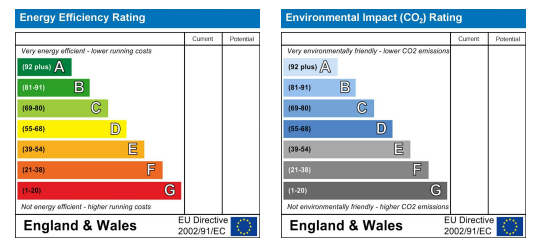
Floor Plan



Area Map



Energy Efficiency Graph



These particulars, whilst believed to be accurate are set out as a general outline only for guidance and do not constitute any part of an offer or contract. Intending purchasers should not rely on them as statements of representation of fact, but must satisfy themselves by inspection or otherwise as to their accuracy. No person in this firm's employment has the authority to make or give any representation or warranty in respect of the property.